

**INVEST
LIVERPOOL
CITY REGION**

VACCINE DISCOVERY DEVELOPMENT AND MANUFACTURING



Message from the Metro Mayor

For centuries the Liverpool City Region has been the home of countless firsts and scientific discoveries that have changed the world.

From establishing the world's first research centre for tropical medicine in 1898 to leading the global fight against future pandemics in 2021 - we are the birthplace of some iconic industries and ingenious inventions that have not only advanced our understanding of infectious diseases – but saved millions of lives.

I'm incredibly proud of our contribution to global health – few places can claim to have made a bigger impact on infection control as a region.

It's a reputation that has been hard won – and we are reaping the rewards. In the years before the COVID-19 pandemic struck, our area attracted more than £2bn of investment in innovation.

But as we look to the future, I want us to go even further, and put our region at the vanguard of UK - and global – innovation.

We have a £3bn pipeline of projects that would help to add £42bn to the local economy, create 44,000 jobs and lead to a 10% increase in productivity. They cover areas as diverse as tidal energy production, decarbonisation of industry, the reimagination of packaging and digital manufacturing.

The journey to realising that ambition is built on enviable foundations: our existing, world-leading industry strengths in infectious disease control to materials chemistry innovation and artificial intelligence.

I want to take advantage of our strengths – and potential - and turn them into profitable businesses, creating better, greener jobs and bringing greater prosperity to local people.

To make that happen, we will be investing 5% of our GVA in research and development over the next few years – nearly double the government's national targets.

We aren't in competition with places like the Golden Triangle because there is really nowhere else like

us. We're on our way to building our own innovation powerhouse right here.

It's a lofty ambition – but I believe if anyone is capable of achieving it, it's the Liverpool City Region.



Steve Rotheram,
Mayor of the Liverpool City Region

At the forefront of infection prevention and control

The COVID-19 pandemic has led to increased global interest in vaccines and through this the UK and the Liverpool City Region has been selected by DIT as the UK's leading hub for vaccine innovation.

The Liverpool City Region has an established and thriving vaccines sector that is competitive and viable, spanning R&D, clinical trials, manufacturing and digital infrastructure. Drawing on the best of research, the workforce, innovation and digital infrastructure, companies based here are able to develop and validate new vaccines and vaccine technologies to improve people's quality of life, globally.

Opportunities exist in discovery, development and clinical trials, manufacturing and supply and logistics of vaccines as well as the ability to collaborate with experts to develop new vaccines and vaccine technology. Businesses locating here would be joining an established and thriving vaccines community with a strong industry footprint, dedicated business support and government funding.

The City Region benefits from having an established vaccine, biotech and wider life sciences ecosystem sitting alongside growing research, digital and clinical capabilities. Establishing a base in the region presents companies with access to the science, expertise, manufacturing and logistics capabilities available through the region, as well as the opportunity to become part of one of the UK's largest life sciences hubs due to its dense, sustainable and highly-integrated ecosystem.

Discovery

Research and develop your vaccine and vaccine technologies through collaboration with renowned experts and access to unique data.

Development and Clinical Trials

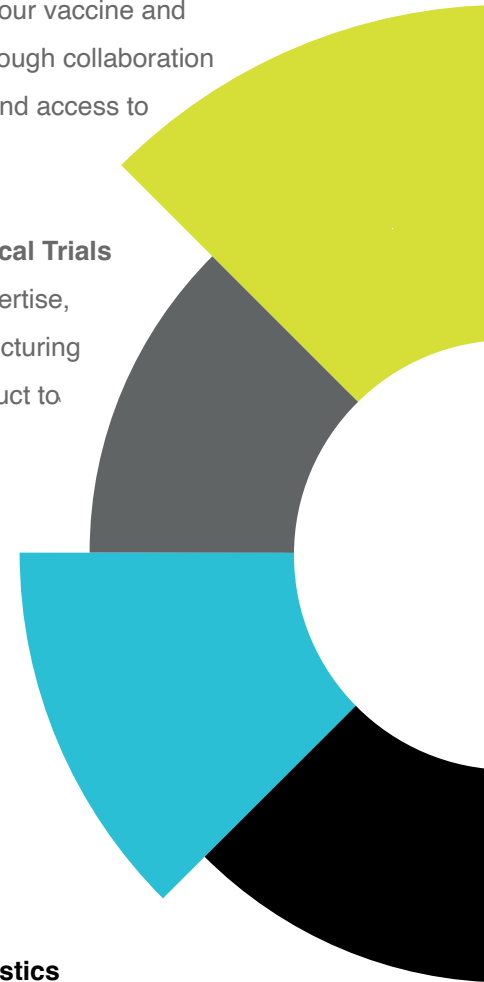
Harness clinical trial expertise, data and flexible manufacturing in order to get your product to market.

Manufacturing

Work with experts to manufacture your vaccine products from small scale clinical trial to bulk production, sustainably.

Supply Chain and Logistics

Store, move and distribute your vaccines through established cold chain networks, motorways, sea ports and airports too.



A world-class location for all aspects of the vaccine journey

An opportunity to access the science, expertise, manufacturing and logistics capabilities available through Liverpool City Region's vaccine development ecosystem. Join an established and thriving vaccines community with a strong industry footprint, dedicated business support and government funding.

Join innovative leaders in biopharma, biotech and vaccines: such as AstraZeneca, Seqirus, Bristol Myers Squibb, Pharmaron, TriRx, Teva and many others.

Plug into an established, innovative and cross-sectoral supply chain: with access to a rich network of companies such as: FactoryTalk, Perceptive Engineering, Glass Futures and Thermo Fisher Scientific.

Benefit from competitive costs and high quality of life: with office space and highly-talented work force and access to affordable living, cultural variety and green space.

Be part of a pioneering cluster: collaborating with world-leading institutes, health centres and facilities such as the Liverpool School of Tropical Medicine, Hartree Centre, the Pandemic Institute and the Centre for Global Vaccine Research at the University of Liverpool.

Access 35,000 highly-skilled graduates alongside professionals and experts: with cross-disciplinary expertise in biology, physical sciences, engineering and digital innovation in biosciences.

Strong health ecosystem: offering your company a launchpad into the vaccine industry, from R&D to product development, access to expertise and regulators, alongside a wide network of NHS trusts, all in close geographical proximity.



iiCON, Leaders in Vaccine Discovery

iiCON - accelerating the discovery and development of innovative new treatments, diagnostics and preventative products for infectious diseases.

The Infection Innovation Consortium (iiCON) is a leading global centre for infectious disease R&D based within the North West of England, bringing together industry, academia and the NHS in a collaborative effort. Its open-access platforms bridge the gap in the infection innovation ecosystem to support co-innovation and accelerate the product journey from discovery to adoption.

iiCON provides access to **10 commercially sustainable specialist research platforms** co-developed and operated by its industrial, academic and clinical partners.

These specialist platforms provide companies from early-stage start-ups to industry giants with world-leading research capability and facilities – enabling access to resources and expertise that can transform the product discovery and development journey.

iiCON has an exceptional skill base, an understanding of and access to the disruptive technologies needed to bolster the infectious disease treatment pipeline and networks with local, national and international stakeholders.

1. Natural product library

2. Hits to leads

3. Organoid models

4. Advanced PK-PD
AMR modelling

5. Human Challenge

6. Diagnostics

7. Randomised control trials

8. Mapping & modelling

9. Nanotherapeutics

10. Formulation of Infectious
Disease Products

Find the expertise and data you need to develop your vaccine technology

Improve your product or technology by making the most of rich research and development expertise, facilities, data and validation across the Liverpool City Region.

Collaborate with experts to develop new vaccines and vaccine technology

Liverpool School of Tropical Medicine (LSTM) and the University of Liverpool (UoL) constitute the UK's largest concentration of expertise in translational-focused research, development and innovation in infectious diseases. Find state-of-the-art facilities across Liverpool institutions including laboratories that are Good Clinical Practice (GCP) compliant and with significant bioanalytical, pathogen sequencing and pharmacogenomic capabilities and the Centre for Global Vaccine Research, which offers expertise in vaccine design, development and testing.

Accelerate discovery through data, data analytics and powerful computing

Work with The Hartree National Centre for Digital Innovation, a collaborative programme with IBM enabling businesses to acquire the skills, knowledge and technical capability required to adopt digital technologies like supercomputing, data analytics, artificial intelligence and quantum computing.

Access a wide range of applications, with associated informatics and analytical processing of data and functional interpretation through The Centre for Genomic Research (CGR), a dedicated centre that facilitates cost-effective access to multiplatform sequencing and array technologies for researchers.

Access local health data through the Liverpool City Region Civic Data Cooperative. Through partnership with local residents and service users, Liverpool Health Partners has combined and improved its facilities for analysing anonymised health and social care data.

Find readily available models and open access platforms

Infection Innovation Consortium (iiCON) bridges the gap in the infection innovation ecosystem. Operating across ten commercially sustainable specialist research platforms. iiCON's collaborative effort is directly reducing the global burden of infectious disease with a coordinated initiative to address key roadblocks in global R&D pipelines and strengthen and regenerate the global supply chain.

Case Study - Pharmaron

Leader in Gene Therapy

The Pharmaron site in Speke, Liverpool, acquired from AbbVie in 2021, has established itself as a global hub serving the global cell and gene therapy product development community. Pharmaron, a world-leading life science service provider, has been investing heavily in the UK counting five sites and over 800 employees, with plans for ambitious growth in Liverpool where the site benefits from a long history of biological manufacturing capabilities and industry-leading expertise in R&D.

Founded as Eden Biodesign in 2000, the site has benefited from the longevity and experience of a dedicated workforce – the key attractor for Pharmaron. Originally, Eden Biodesign was recruited to design and operate the UK National Bio Manufacturing Centre in Speke and the skills and technologies developed during this period helped to lay the foundations for Pharmaron's future long-term success.

Having played a key part in establishing Liverpool City Region as a leading area for the sector, Pharmaron Gene Therapy's Liverpool operation is now able to reap the rewards through its collaboration with local universities and technology businesses. Over the years, the company has offered a range of opportunities to graduates and students since 2005, with a number of them progressing through the ranks and remaining at the company today.

As part of the acquisition, there will be over 200 additional jobs created at the Liverpool site with the latest expansion plans. Pharmaron is working closely with Liverpool City Region's Growth Company - Growth Platform, the Metro Mayor Steve Rotherham and the Liverpool Planning Office to design and deliver a plan that will benefit the wider community as well as drive forward the businesses growth plans.



Inspiring Innovation

Liverpool City Region offers the ideal combination of natural assets, world-leading science and innovation to translate ideas into real-world solutions to unlock innovation-led market opportunities.

Innovation is a top Mayoral and City Region priority, rooted in 300 years of world-changing inventions and a strong track record of public-private sector collaborations on R&D innovation, unlocking new markets and fuelling economic growth.

As highlighted in the 2022 Innovation Prospectus, the Liverpool City Region has secured £2bn of innovation infrastructure investment over the last 5 years and currently has £1bn of initiatives in delivery.

Investment opportunities are focused on the Liverpool City Region's distinctive, world-leading assets and capabilities in Infection Prevention & Control, Materials Chemistry, AI Solutions & Emerging Technologies. Internationally-recognised

experts, global brands, and leading science and tech assets are supporting the development of world-first approaches in these fields as well as simultaneously addressing our ambition to become net-zero by 2040, 10 years ahead of the UK target.

The City Region has a £3bn plus pipeline of future innovation projects, with £9bn plus additional investment opportunities relating to major net-zero programmes Mersey Tidal and HyNet North West.

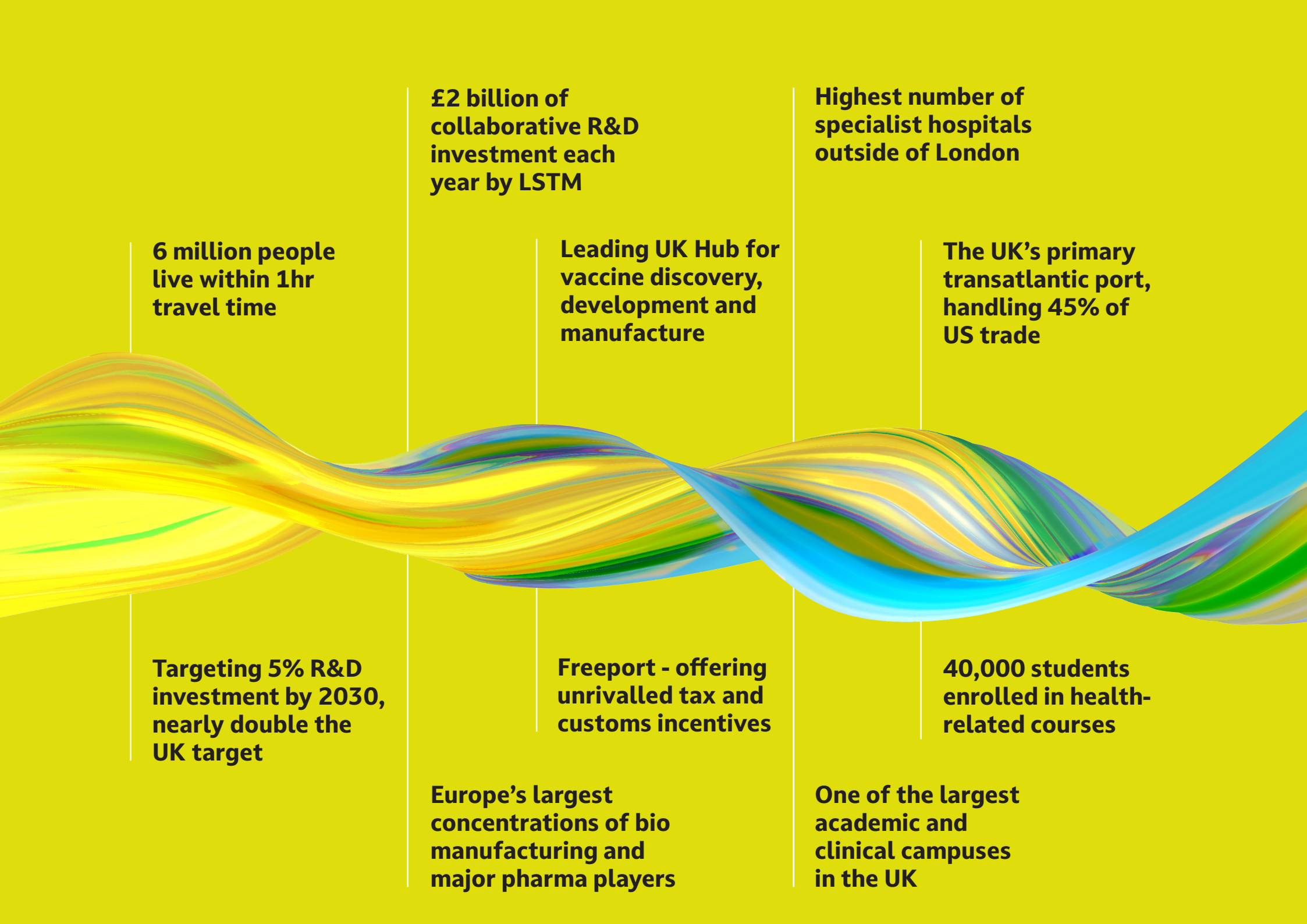
Confident of our capabilities we've set an ambition of investing 5% of our GVA annually by 2030, nearly double the UK target.

We have one of the most advanced place-based approaches to innovation in the country, reflected in our selection by Innovate UK as one of two national pilots for UKRI's Launchpad programme and as the first place to forge a formal Partnership Agreement with.

This is further underpinned by the UK's first sub-regional Innovation Board, first Innovation Skills for Growth strategy, UK Freeport designation, plus singular asset-based cluster development approach and dedicated commercialisation vehicle LYVA Labs and two nationally significant science and innovation campuses: Knowledge Quarter Liverpool and UKRI's primary northern base at Sci-Tech Daresbury.

Combined with bespoke business support and a forward-thinking political approach to innovation partnerships this makes us the ideal location to help you unlock your innovation-led opportunities.

[Read the Liverpool City Region Innovation Prospectus](#)



6 million people live within 1hr travel time

Targeting 5% R&D investment by 2030, nearly double the UK target

£2 billion of collaborative R&D investment each year by LSTM

Leading UK Hub for vaccine discovery, development and manufacture

Freeport - offering unrivalled tax and customs incentives

Europe's largest concentrations of bio manufacturing and major pharma players

Highest number of specialist hospitals outside of London

The UK's primary transatlantic port, handling 45% of US trade

40,000 students enrolled in health-related courses

One of the largest academic and clinical campuses in the UK

Trial new vaccines in a highly connected, collaborative environment

The Liverpool City Region provides industry with a world-leading clinical trial ecosystem facilitated by the National Health Service by harnessing data, clinical expertise and flexible manufacturing.

Effective and experienced trial delivery

Work alongside knowledgeable trial organisations such as The Liverpool Clinical Trials Centre, a leading UK clinical trials unit and methodological research group and Royal Liverpool Clinical Research Unit (CRU), the first NHS facility in England to be granted MHRA standard and supplementary Phase I Accreditation.

The City Region is also part of the National Institute of Health Research (NIHR) Clinical Research Network in the North West which ensures clinical trials are delivered effectively to drive forward key research.

Liverpool Health Partners' Single Point of Access to Research and Knowledge (SPARK) brings together the NHS, universities and commercial organisations

in an average of nine days to agree study set-up and approval.

Strong clinical trials cohorts

NIHR Alder Hey Clinical Research Facility is a state-of-the-art facility delivering early phase and experimental medicine clinical research studies with babies and children for commercial and non-commercial sponsors. Their principal investigators are highly experienced, knowledgeable and clinically active.

Royal Liverpool CRU manages the Liverpool Trust's validated database of over 7,000 volunteers from healthy patient populations and enables clinical trials in patients to some of the most rigorous standards in the world.

Support for development, formulation and analysis

Explore innovative vaccine delivery methods through collaboration with experts in advanced formulation: Liverpool John Moores University's Formulation and Drug Delivery Group brings together researchers from across chemistry, biomaterials, pharmaceuticals and biological sciences.

Collaborate with Pharmaron, a CDMO with a state-of-the-art, flexible cGMP biomanufacturing facility leveraging the industry-leading expertise in the process R&D, cGMP manufacturing and advanced analytical capabilities in a broad range of biologics products. A key strength and focus of the Liverpool site is developing and manufacturing viral-based therapies.

The Pandemic Institute

The Pandemic Institute's mission is to accelerate the response to emerging infection threats, unify global intelligence and produce high impact outputs applicable to governments, businesses and individuals.

- **The Pandemic Institute, launched in 2021, is formed of seven founding partners from the Liverpool City Region: The University of Liverpool, Liverpool School of Tropical Medicine, Liverpool John Moores University, Liverpool City Council, Liverpool City Region Combined Authority, Liverpool University Hospitals NHS Foundation Trust and Knowledge Quarter Liverpool.**
- **The Liverpool City Region has a unique set of characteristics and existing institutions which are not directly replicable either nationally or globally, thus providing the optimal location for a world-class institute.**
- **We provide comprehensive end-to-end capabilities across the emerging infection lifecycle to accelerate the global response to current and future emerging threats (see box on right).**
- **Through our founding partners, we have an impressive breadth of clinical, academic, public health and data-driven expertise.**
- **Flagship and priority pathogen research within The Pandemic Institute includes: Influenza, Monkeypox, CCHF, SARS-CoV-2, MERS Flaviviruses, Lassa and Hanta.**



Predict

Proactive identification of pathogens, hosts and locations of potential future epidemics and pandemics.

Prepare

Supporting increased capacity and capability to translate insights into action.

Prevent

Raising barriers to slow the transmission of infectious diseases.

Respond

Accelerating scalable diagnostics, therapeutics and vaccines to protect the global community and environment.

Recover

Repairing negative social, environmental and economic impacts from emerging infections and enabling new growth.

Case Study - AstraZeneca

Leveraging the benefits of Liverpool City Region

AstraZeneca is well established in the Liverpool City Region's (Liverpool City Region) rich life sciences ecosystem and thriving vaccines sector spanning world-class R&D, clinical trials, a flexible manufacturing ecosystem, digital infrastructure and dynamic supply chain.

The sites are well placed to attract expert talent with experience in egg-based vaccine manufacturing, alongside accessing a talent pool of 35,000 highly-skilled graduates and experts with cross-disciplinary expertise in biology, physical sciences, engineering and digital innovation. The sites also benefit from close links to the region's strong academia, exemplified by the Liverpool School of Tropical Medicine and the University of Liverpool – the UK's largest concentration of expertise in translational-focused research, development and innovation in infectious diseases.

Thanks to the site's high standards and impressive capabilities, they have been able to ensure a

reliable supply to the end-stage of production in Philadelphia. AstraZeneca continuously meets a demanding 'golden batch' criteria of quality which is measured by a lack of deviation and timeliness of production. The company invested £35m in the redesigning of its egg-based influenza vaccine drug substance manufacturing facility in the Liverpool City Region to achieve award winning equipment innovation and significant throughput efficiencies.

Recently, AstraZeneca has worked closely with the Growth Platform to find potential investment sources, explore innovation catapults and leverage expertise coming out of landmark Liverpool City Region sites such as Sci-Tech Daresbury.

AstraZeneca is exploring the vast Freeport opportunities in the City Region, with strategic ambitions to manufacture more of its products for export purposes in the Liverpool City Region.

AstraZeneca 

121

AstraZeneca 



Manufacture your vaccines at reduced risk and cost

The Liverpool City Region's vaccine and biopharmaceutical cluster provides the support and knowledge needed for the development, scale-up and commercialisation of your vaccine and vaccine technology.

Test and prove technologies for your own production environment

The Digital Manufacturing Accelerator at the Manufacturing Technology Centre, brings world leading manufacturing research, technology and experts together. The £15 million funded programme aims to accelerate the implementation of innovative physical and digital manufacturing technologies into UK manufacturing and supply chains.

The project will build a state-of-the-art reconfigurable factory, with digital and physical test beds, to support manufacturing businesses and provide new high value engineering jobs and apprenticeships. The facility will utilise cutting-edge equipment, software and expertise to support organisations with the research and development of their products, manufacturing processes and technology.

Join a flexible manufacturing environment

You can find access to both bulk and flexible vaccine production facilities providing small batches to full-scale manufacture.

Seqirus, part of CSL Limited, has spent over £75m over last five years developing an end to end manufacturing facility to support the production of influenza vaccines.

AstraZeneca invested £35m in the redesigning of its egg-based influenza vaccine drug substance manufacturing facility in the Liverpool City Region to achieve award winning equipment innovation and significant throughput efficiencies.



Plug into an established and knowledgeable supply chain and logistics network

The Liverpool City Region provides easy access to both national and international trade links alongside innovative connectivity, supply chain and logistics, helping to fast track your vaccine development and manufacture and provide fast and resilient access to markets.

The City Regions western-facing port and central UK location provides an ideal base, providing access to high quality infrastructure and incentives to supply your products around the world.

Liverpool City Region was awarded Freeport status in March 2021, with operations commencing in 2022 – specific geographic areas which have different tax and customs rules than the rest of the country. Imports can enter freeport customs zones with simplified customs procedures and do not have payable tariffs and receive a range of special regulatory and tax benefits.

Alongside the major global manufacturers, you will find a strong local supply chain of small and medium sized companies that serve the sector in a variety of ways from medical packaging to specialist

logistics. Work with local innovative companies such as ChargePoint Technology and Breathe Technologies to improve logistics and supply chain automation.

Sci-Tech Daresbury and the Digital Manufacturing Accelerator can provide networking opportunities allowing for swift integration to the area.

Collaborate with experts in logistics and supply chain management with the Centre for Supply Chain Research at the University of Liverpool and Liverpool Business School at Liverpool John Moores University; both focus on developing and applying advanced solutions to improve productivity, responsiveness and resilience in supply chains.

Access and take part in collaborative research, knowledge exchanges and consultancy services available for public and private sector organisations.

The Liverpool City Region can help you fast track vaccine development and manufacture and provide fast and resilient access to markets and efficient connectivity to global supply chains and customers.



Industry Associations

Association of the British Pharmaceutical Industry (ABPI)

Trade association for UK companies producing prescription medicine.

BioPartner

An independent, accredited trade organisation that supports UK international trade for Life Sciences.

MediLink North of England

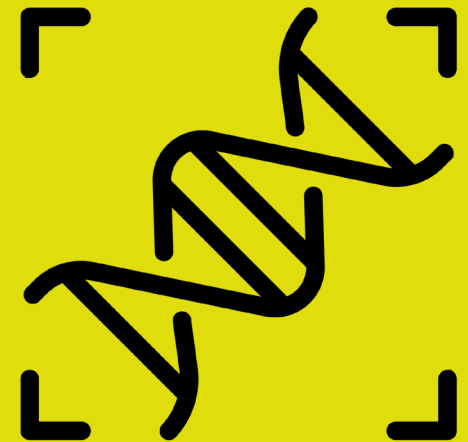
Fast tracking the development of Life Science companies through enhancing their connectivity and provision of paid-for consultancy services.

Bionow

Membership organisation supporting the biomedical, pharma and life sciences sectors across the North of England.

BioIndustry Association (BIA)

Trade association for innovative life sciences in the UK.



Research and Collaboration

UK Vaccine Network

Bringing together industry, academia and funding bodies to make targeted investments in vaccines and vaccine technology.

Northern Health Science Alliance (NHSA)

North of England's health partnership bringing together 10 universities, 10 research-intensive NHS Trusts and 4 AHSNs.

The AHSN Network

Established by NHS England to spread innovation at pace and scale.

North West HealthTec Cluster

A community dedicated to increasing intra & cross-sector connectivity, supporting cutting edge R&D, commercialisation of health technology solutions.

NW Digital Technology Cluster

A community of digital companies accelerating the development of innovative solutions through access to supercomputing, data analytics and AI expertise and support.

TriRx

Contract development & manufacturing organization focused on non-sterile & sterile products, animal health injectables & packaging.



Regulatory and Assessment

Medicine and Healthcare Products Regulatory Agency (MHRA)

Executive agency responsible for the regulation of medicines and medical devices.

National Institute for Health and Care Excellence (NICE)

NICE provides national guidance and advice to improve health and social care.

National Institute for Health Research (NIHR)

The nation's largest funder of health and care research.

Innovation Support

CPI

An independent deep tech organisation collaborating with industry, academia, and government to accelerate the development and commercialisation of innovative products.

UKRI

Non-departmental public body sponsored by BEIS and the UK's largest public funder of research and innovation.



Liverpool City Region Freeport: A Catalyst for Growth

One of only eight Freeports in England, the Liverpool City Region combines geographic, operational, financial and commercial advantages that makes it uniquely well-suited to driving business growth, innovation and collaboration.

Example of how the Liverpool City Region Freeport could benefit a pharmaceutical company:

Business A is a pharmaceutical company involved in research and development as well as the manufacture of vaccines and other pharmaceutical products.

Current position

They do not currently operate within the UK but are looking to establish a new facility here. They plan to import supplies and materials using a freight forwarder from across the world by air for use in both research and manufacturing. The finished vaccines and other products would then enter the domestic market or be exported across Europe with the relevant export declarations made.

Future position

Once the relevant processes have been followed to establish themselves as a business operating within the UK, they have an opportunity to base themselves in an existing customs site within a UK Freeport where they would be co-located with other businesses involved in life sciences and be near to airport and port facilities.

This would provide significant administration and cash flow savings to the business, removing the requirements for inward processing and customs warehousing procedures, supplementary declarations and suspending duty and VAT.

Their products can move between storage and processing facilities without needing a separate

declaration. Final duty is paid on the end product or originally imported goods; whichever is lower on goods released to free circulation. No duty or VAT is paid on the exported goods.

These benefits also go hand-in-hand with the fact that companies will be operating within a pioneering City Region ecosystem that's infused with world leading technology, skills, ideas and institutions.



UK Freeport Benefits

Tax:

- Business Rates Relief at 100% Business Rates relief for new properties / partial for existing until 2026
- Stamp Duty Land Tax (SDLT) at 0% to 2026
- Employer National Insurance Contributions (NICs) for salaries up to £25k for 3 years
- Enhanced Structures and Building Allowance at 10% deduction p.a. up to 2026
- Enhanced Capital Allowances at 100% first year for plant & machinery; 10% deduction p.a.

Customs:

- Trade benefits - access to simplified imports procedures arrangements
- VAT suspension until goods enter circulation in UK
- Duty referral for goods stored on site
- Duty inversion for goods exiting the Freeport
- Duty exemption for goods exported from Freeport

Planning:

- Provide a supportive planning environment for the development of tax and customs sites
- Local Development Orders
- Public sector support for land-remediation
- Permitted development land extension



A skilled and experienced workforce ready to support your investment

A central geographical location puts the Liverpool City Region at the heart of the Northern labour market giving businesses access to one of Europe's largest commuter workforces and a steady pipeline of students and graduates educated for the vaccines and biotechnology sector.

With 14 universities within reasonable travel distance, there are almost 40,000 students in the wider regional catchment area studying relevant specialist degrees and on average over 40% of students stay in the City Region to further their research or careers. As well as a further 2,250 people employed by major players in the pharmaceutical manufacturing sector and we have hundreds of medical companies located in the region. This has helped us create the Liverpool-Manchester life sciences corridor – which is considered to be one of the UK's top three clusters of biomedical activity.

The Liverpool School of Tropical Medicine (LSTM) will be expanding its footprint in Liverpool to further increase its capacity to develop the local, national and international workforce and to train

future leaders in public health and translational research. Providing innovative learning platforms and cutting-edge facilities, LSTM will be equipped to facilitate effective interactions with industry, NHS, philanthropic partners, students and local communities.

The City Region is also home to the first school in the UK to specialise in science and health care for students aged 14–19. The Liverpool Life Sciences UTC combines academic education with specialist vocational qualifications to prepare students for the world of work. Local employers from the sector play a major role in the development of the Life Sciences UTC. They work to shape the curriculum with a specific focus on the technical skills and knowledge that relate to future jobs and skills shortages that match the needs of the local economy.



Case Study - Seqirus

A foundation for success

Seqirus draws on over a century of experience in influenza vaccines, and as such, is the only vaccine company with a singular global focus on influenza.

Having been based in Speke since 1947, Seqirus has become the largest vaccine manufacturing facility in the UK, producing over 50m doses of seasonal influenza vaccine each year, with the ability to increase production to 200m doses in the event of an influenza pandemic. The site now has a high-speed fill-and-finish facility, which enables start-to-finish onshore manufacturing, where previously the vaccine would be sent abroad to be put into syringes and represents an investment of nearly £50m creating more than 120 high value jobs.

Throughout its 70-year-plus history in Liverpool, Seqirus has acted as a foundation for the Health and Life Sciences industry across the Liverpool City Region, playing a key role in fostering an early ecosystem to encourage growth. Over the following decades, the Liverpool City Region has gone on to become a hub for Health and Life Sciences and now inhabits a rich, collaborative network of businesses that support one another's growth strategies.

Being based in such a well-established hub for Health and Life Sciences continues to open doors for those within the sector, including a deep talent pool of skilled workers. Seqirus works with universities from across the region including the University of Liverpool, Liverpool John Moores University and the University of Manchester, ensuring courses are tailored to the needs of the sector.



Access a well-connected network of support

Growth Platform's Inward Investment Service can help you invest in the Liverpool City Region and support you when you land here to drive your business forward.

Growth Platform is the Liverpool City Region's growth company. Providing business with one point of access to dedicated support and guidance on growth, investment and collaboration opportunities in the City Region.

We promote and nurture opportunities for national and international businesses to locate, invest and expand here, providing a full suite of investment services, including:

- **Bespoke intelligence-gathering**
- **Commercial property and relocation advice**
- **Access to soft-landing packages**
- **Guidance on financial incentives**
- **Dedicated account management**

We help businesses to gain a competitive advantage by connecting them with the City Region's world-leading universities, business accelerators, sector support networks and state-of-the-art R&D infrastructure. Our soft-landing package for companies consists of:

- **Dedicated account manager**
- **Skills and recruitment support**
- **Discounted professional services**
- **6-12 months free desk space**
- **Introductions to local networks**



Inspiring Place

Attract, retain and inspire the best talent by offering them an exceptional quality of life in a world-renowned capital of culture.



An inspiring location with a high quality of life

Internationally renowned for our vibrant culture, open green spaces and great lifestyle as well as dynamic economy, the Liverpool City Region is a sought-after destination for visitors, students and those wanting a high quality of life and great career options.

Liverpool is a thriving city, yet its property prices and the cost of living remain low compared to other UK cities, providing the ideal location for both businesses and employees.

Liverpool has the largest number of museums and art galleries after London, with the Royal Albert Dock the city's biggest attraction. Find easy access to open green space such as parks, beaches, promenades and waterfronts all within an hour of the city centre. National Parks such as the Lake District, Snowdonia and the Yorkshire Dales are also a short drive away.

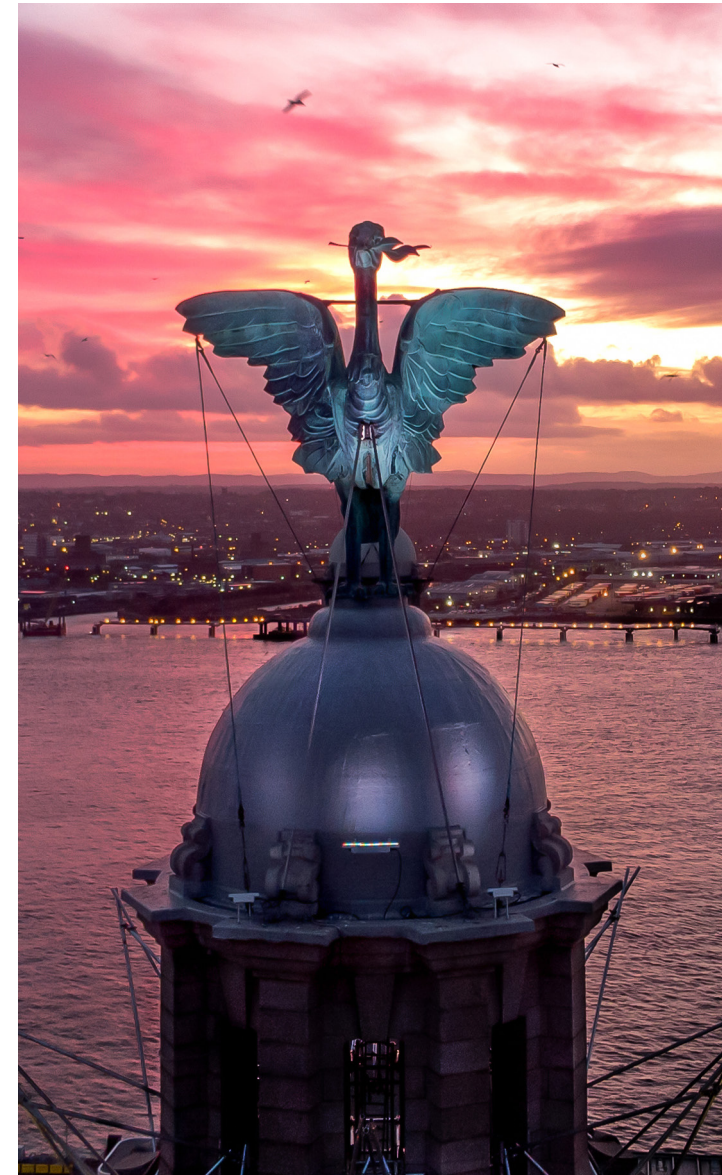
One of the UK's most affordable places to live, the City Region provides quality affordable housing for workers and their families. Liverpool City Council has an ambition to build, buy or own up to

10,000 stock within the city in the next ten years. The average property price in Liverpool is £134k, considerably lower than the UK average of £256k, according to the UK House Price Index.

With well-regarded further and higher-education colleges, and high-performing state and independent schools the wider catchment area for the City Region is home to over 250,000 students across 14 Universities and boasts a strong pedigree of academic and research achievements research.

There's also strong links to industry creating apprenticeship programmes across a wide spectrum of industry sectors and roles.

The City Region has excellent transport links across the United Kingdom, including to Manchester, London and Edinburgh, sea links to Ireland, as well as internationally through local airports.



Get connected to the world

A connected transport network providing access to the rest of the UK, Europe and beyond.



Air

Fly to major global cities via two easily accessible international airports covering 200+ global destinations.

- **Liverpool John Lennon Airport**
- **Manchester Airport**

Rail

The National Rail network is easily accessed with fast and frequent services to London and other major centres.

- **50 minutes to Manchester Piccadilly**
- **2 hours to London Euston**



Road

The area is well linked into the remainder of the UK through the motorway network – Liverpool’s motorway connections put the vast majority of UK cities from Glasgow to Southampton within four hours drive time.

Road

The Port of Liverpool is a key asset to the area, with global shipping routes. The River Mersey hosts one of the UK’s largest ports, relied upon by the five largest global shipping carriers.

The region was awarded Freeport status in the March 2021 Budget, subject to the development of a business case. Working with Government, this process has been ongoing and it is expected that the Freeport will commence operations in 2022.



Digital Connectivity

Liverpool City Region Connect is a 212km full-fibre, ultrafast, gigabit-capable network spanning the Liverpool City Region and will allow businesses, investors, universities, schools, hospitals and students across the region to access next-generation, future-proofed and cloud-enabled technologies.

Connecting all six local authorities within the region, the network will link key digital assets including data centres, exchanges and landing stations for continental and intercontinental connections.



Ready to see how the Liverpool City Region can inspire your business?

We would love to hear from you!

Simply scan the QR code to learn more and connect with our sector experts or alternatively, contact our Head of Investment Services.



Alice Lamb, Head of Investment Services

Tel: 44 (0)151 237 3919

Mobile: +44 (0)7715 123483

Email: alice.lamb@growthplatform.org

investliverpoolcityregion.com



In association with



Department for
International Trade