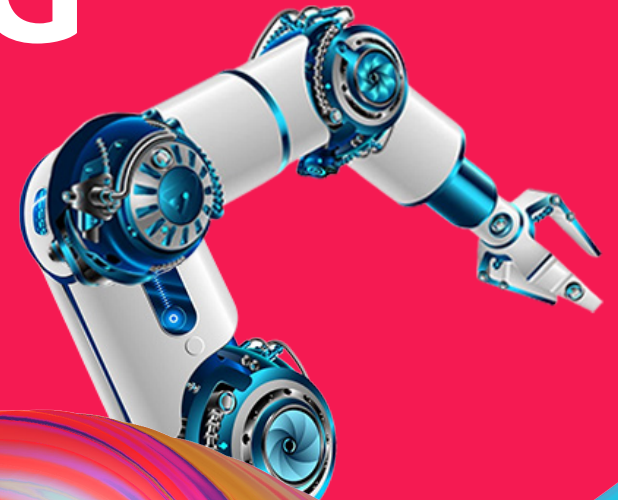


INVEST
LIVERPOOL
CITY REGION

INSPIRING MANUFACTURING



Discover a port centric location offering global trade opportunities, a skilled manufacturing workforce and the latest smart factory capabilities.

A place for makers and creators, Liverpool City Region provides unrivalled transatlantic links and fast access to markets and consumers across the world.

With a Port that's the closest to more than 50% of UK manufacturers and with the capability to service 95% of the world's largest container ships, Liverpool City Region is driving continent-spanning connections and inspiring world-beating advances in manufacturing.

Home to one of Europe's largest biomanufacturing clusters as well as leading research capabilities clustered in Liverpool's Knowledge Quarter you'll be joining the likes of Jaguar Land Rover, Unilever and Astra Zeneca in benefitting from advanced manufacturing facilities across the City Region.

With a 50,000-strong, modern manufacturing workforce the skill base here is enriched by the long-term presence of major OEMs, world-leading Universities and an agile, industry 4.0-enabled supply chain.

You can gain competitive advantage through accessible, state-of-the-art R&D infrastructure and dedicated digital manufacturing expertise as well as a progressive approach to sustainability.

**Central &
Connected Freeport**

**Manufacturing
Excellence**

**Science &
Innovation**

**Sustainable
Future**



Map of Key Clusters



1. **Port and Bootle** – Petrochemicals and Food
2. **Knowsley** – General Engineering and Chemicals
4. **Cammell Laird** – Maritime and Renewables
5. **Liverpool Knowledge Quarter** – R&D
6. **Port Sunlight** – R&D, Manufacturing and Enterprise Technology
7. **Speke** – Biomanufacturing
8. **Halewood** – Automotive
9. **Runcorn** – Chemicals
10. **Daresbury** – Innovation and R&D
11. **Ellesmere Port** – Automotive

A world-class location for all aspects of the manufacturing journey

An opportunity to access the skilled workforce and technological expertise of Liverpool City Regions advanced manufacturing sector as well as benefit from a central UK location and western facing freeport that provides all the advantages of port centric production.

Join global leaders in manufacturing across multiple sectors, including automotive, chemicals, pharmaceuticals, food and consumer goods, with major players like Astra Zeneca, Jaguar Land Rover, Unilever, Bristol Myers Squibb and innovative start-ups.

Plug in to an experienced supply chain and collaborative network that can provide tailored expertise, support and an ecosystem geared to advancing digital transformation and innovation in manufacturing processes.

Benefit from a western facing port location at the centre of the UK, with fast and efficient links to UK and global markets and a well-integrated transport and logistics infrastructure.

Gain competitive advantages from locating in a Freeport site that can provide attractive tax incentives and tailored development support to those importing and exporting.

Access a 50,000 strong skilled manufacturing workforce, complimented by over 15,000 students on manufacturing and engineering related courses at universities with highly regarded specialisms in materials chemistry and engineering.

Take advantage of a competitive cost base and a high quality of life: with high quality factory and office space, land and distribution facilities as well as access to affordable living, cultural variety and green spaces.



As the UK's primary transatlantic port, Liverpool City Region gives manufacturers major trading advantages and a choice of travel – via road, rail, land and sea.

A global gateway offering unrivalled transatlantic links and fast access to markets and consumers, populated by leading OEMs and prime businesses across the spectrum of advanced manufacturing.

An abundance of modern, multi-modal logistics, easy access to national motorway and rail networks as well as good airport links, are some of the reasons established OEMs and global prime businesses choose Liverpool City Region. Locating here places you alongside world-leading manufacturers across automotive, pharmaceutical, chemicals, FMCG and F&B - including Unilever, Jaguar Land Rover, Vauxhall (Stellantis), AstraZeneca and NSG Pilkington, as well as in close proximity to major hubs of aerospace and nuclear expertise.

Those manufacturing here can also tap into a resilient and high-capacity digital infrastructure, helping business meet the demands of an increasingly online and data driven world. The City Region has a 212km full fibre, gigabit-capable network as well as direct access to multiple global exchanges, making it one of the most digitally well connected regions in the UK.



15,000 MANUFACTURING STUDENTS AT OUR HIGHLY REGARDED UNIVERSITIES

INVESTING £1 BILLION INTO OUR LOGISTICS INFRASTRUCTURE

FREPORT STATUS OFFERING TAX AND CUSTOMS INCERTNIVES

CAPABILITY TO SERVICE 95% OF THE WORLD'S LARGEST CONTAINER SHIPS

OVER 2,500 COMPANIES EMPLOYING 50,000-STRONG MODERN MANUFACTURING WORKFORCE

ONE OF ONLY 7 UK GOVERNMENT APPROVED MANUFACTURING TECHNOLOGY CENTRES IN THE UK (MTC)

CLOSEST PORT TO MORE THAN 50% OF UK MANUFACTURERS

RESPONSIBLE FOR 15% OF THE UK'S ANNUAL CAR PRODUCTION

THE UK'S PRIMARY TRANSATLANTIC PORT HANDLING 45% OF US TRADE

ONE OF THE HIGHEST CONCENTRATIONS OF MATERIALS AND SCIENCE ROBOTICS IN THE WORLD

HOME TO UK'S LEADING DIGITAL ENGINEERING IMPACT CENTRE (DIF)

ONE OF EUROPE'S LARGEST BIOMANUFACTURING CLUSTERS



Case Study - Factorytalk

Ideal location to support growth

Originating from South East Asia, Factorytalk specialises in manufacturing IT solutions and compliance consulting and has a vision to provide the highest quality services to the pharmaceutical, bio-tech, life science and medical device regulated industries.

In order to support their EU and US expansion, Factorytalk decided to open a UK office in 2020, with the Liverpool City Region being the most appealing location due to its strong expertise and facilities that enable digital transformation. There is a thriving network of pre-existing businesses based across the pharmaceutical, bio-tech, life science and medical device regulated industries.

Factorytalk is now situated at Sci-Tech Daresbury in Halton, which is able to offer the business valuable access to a world-leading network of other businesses and academics as well as an in-depth support network.

These connections have been pivotal in driving forward Factorytalk's UK growth strategy and enabling the business to collaborate with others in the immediate vicinity.

One example of these collaborations is that Factorytalk has now partnered with the Manufacturing Technology Centre to launch the Digital Manufacturing Accelerator, which simply would not have happened without being based in the Liverpool City Region – and is expected to play a key role in the businesses next stage of growth.

Reflecting upon FactoryTalk's move to the Liverpool City Region, Managing Director of Factorytalk UK Neil Wetherall, said: "The Liverpool City Region's leading position within pharmaceuticals, bio-tech and life sciences is undeniable. There are so many world-leading businesses headquartered in the region, and this played a key role in Factorytalk selecting the Liverpool City Region as its own UK hub.

Factorytalk+



Manufacturing Excellence

Fusing together a diverse experience across a wide range of sectors – from aerospace, automotive, marine, and chemical to biotechnology, energy, and food and drink, our manufacturing legacy shows no signs of slowing down.

Liverpool City Region is a place where modern manufacturing skills are complemented by digital talent, agile, industry 4.0-ready supply chain partners and world leading Universities.

A skilled workforce and highly developed supply chain has been cultivated by the long-term presence of global leaders in the automotive, chemicals, bio-manufacturing, and FMCG sectors alongside Universities with world-leading credentials in engineering, chemistry and computer science.

The region's manufacturing workforce is complemented by a high density of dynamic SMEs and technology businesses, including specialist expertise in industrial robotics and automation. Sustained investment in industrial digitalisation, such as the pioneering LCR 4.0

initiative, means you will find agile supply chain partners with the skills and technology to meet the changing needs of advanced manufacturing.

This combined with the presence of the Manufacturing Technology Centre (MTC) – one of just seven High-Value Manufacturing centres in the UK – is future-proofing the Liverpool City Region as a centre of digital manufacturing expertise with leading-edge facilities and knowledge.

More than 15,000 students study manufacturing-related courses at our world-leading Universities and our huge further education infrastructure - including a dedicated Engineering College - provides vocational training tailored to the needs of employers.



Case Study - Unilever

Lever Brothers first established in the UK, in 1851. The Port Sunlight site in Liverpool City Region was built by Lever Brothers in 1888 to accommodate workers in its soap factory (now part of Unilever)

Today the site is a hub for Unilever globally with 2,500 employees in roles ranging from global R&D to enterprise technology, to manufacturing laundry, household and personal care products.

In 2018, Unilever opened both a new £81 million-pound Materials Innovation Factory and a new £24 million Advanced Manufacturing Centre facility in Liverpool.

The Materials Innovation Factory brings together materials chemistry expertise with the latest computational and robotic equipment, to accelerate research and reduce the time it takes to develop new products which have the potential to address a range of societal challenges.

The 6,500 sq m Advanced Manufacturing centre houses a state-of-the-art pilot plant enabling scientists and engineers to test new ideas during product development on a factory scale. The new Centre is the latest in a line of recent investments at Port Sunlight, totalling over £200 million.

Unilever plans to continue to invest heavily in product development and research, from its Liverpool City Region base.



Unilever



Science & Technology

Our thriving science and technology hubs provide the region with a unique cluster of state-of-the-art innovation facilities and expertise in emerging sectors that will help you gain a competitive edge and access a collaborative network.

The Liverpool City Region's unique convergence of state-of-the-art innovation facilities, world leading academic research institutions and expertise in emerging technologies will help you to reduce the cost and risk of R&D.

This includes organisations and assets dedicated to digital innovation in the manufacturing and engineering sectors, including the University of Liverpool's Virtual Engineering Centre (VEC), and the Manufacturing Technology Centre (MTC).

The Science and Technology Funding Council's (STFC) Hartree Centre is home to some of the most advanced computing, data analysis and AI technologies in the world, used by industry to accelerate the adoption of high performance

technologies and achieve transformative gains in performance, productivity and time to market.

The Materials Innovation Factory (MIF) – a partnership between Unilever and the University of Liverpool – offers flexible access to one of the highest concentrations of robotics for materials chemistry and formulation in the world.

These assets are complemented by a range of science and technology clusters across the City Region, including the Sci-Tech Daresbury campus and Knowledge Quarter, which are home to a wide range of potential suppliers and partners from established technology businesses to scale-ups with a focus on AI and data analytics.



Universities & Education

The University of Liverpool

The University of Liverpool has 91% of its research ranked world-leading or internationally excellent and is driving the City Region's knowledge economy through close collaboration with fellow Universities, industry and the NHS.

Liverpool John Moores University

Liverpool John Moores University offers over 200 undergraduate courses including specialist courses in areas such as International Banking and Finance at the Liverpool Business School along with a popular Executive MBA programme.

Edge Hill University

Edge Hill University, holder of the Modern University of the Year in the Times/ Sunday Times Good University Guide, has a strong focus on developing skills with real world application.

Liverpool Hope University

Liverpool Hope University is ranked second in the UK for graduate employability due to its tailored graduate programme for SMEs in everything from Software Engineering and Human Biology to Digital Creativity and Film Production.

Innovation Campuses

Sci-Tech Daresbury

Sci-Tech Daresbury is a National Science and Innovation Campus and home to UK Research and Innovation's northern laboratory – STFC's Daresbury.

The Knowledge Quarter

The Knowledge Quarter is centrally located in Liverpool city centre and sits adjacent to the University of Liverpool campus and the world renowned Liverpool School of Tropical Medicine and is home to Northern headquarters of The Royal College of Physicians.

Innovation Assets

Manufacturing Technology Centre (MTC)

The Manufacturing Technology Centre (MTC), part of the high value manufacturing catapult, provides industry with unrivalled expertise in the development of industrial applications. It is one of only 7 such UK Government approved centres in the UK and enables manufacturers to translate academic research into innovative industrial solutions. Their experts can help you find breakthroughs using emerging digital technologies and capabilities.

Glass Futures

Glass Futures is a £53m investment in decarbonising the glass industry and developing relationships with members to manufacture medical grade glass.

Virtual Engineering Centre (VEC)

Established in 2010 by the University of Liverpool, supported by EU funding and in partnership with BAE Systems and the National Nuclear Laboratory sits within the University's IDEAS (Institute of Digital Engineering and Autonomous Systems) and works to bridge the innovation gap between academic research and new product and process development.

Digital Innovation Facility (DIF)

£12.7m for process and product enhancement. Digital Innovation Facility (DIF), provides the UK's leading digital engineering impact centre.

Materials Innovation Factory

An £81m joint venture between Unilever and the University of Liverpool pioneering robotics and computer-enabled materials discovery.

National Packaging Innovation Centre

National Packaging Innovation Centre, aiming to double the current UK global sustainable packaging market by 2030.

| Case Study - Cammell Laird

Cammell Laird has been at the heart of British manufacturing for the last two centuries.

At its Birkenhead site on the River Mersey, you'll find one of the best and most competitive heavy fabrication facilities in the engineering industry, including one of the largest modular construction halls in Europe.

World-class facilities and the right engineering skills are providing services to maritime, civil nuclear, oil and gas, petrochemicals and renewable energy projects.

Ship-building and refitting capabilities continue to be at the heart of Cammell Laird's work, as seen with the construction of the flight decks for HMS Queen Elizabeth, the Royal Navy's aircraft carrier and centrepiece of the UK's military capability.

In 2015, Cammell Laird won the contract to build the new £200 million polar research ship HMS Sir David Attenborough. The ship is equipped with onboard laboratory facilities and robotic technologies to monitor environmental changes to the polar oceans of the Arctic and Antarctica.

Thanks to major investment in its port infrastructure and facilities, Cammell Laird also plays a critical role in the region's offshore wind industry, handling huge component parts for the construction of the wind farms in the Irish Sea, working with international partners such as RWE and Dong Energy.



Sustainable Future

Create your sustainable future where a progressive environmental agenda and major investments in renewables and rapid digital connectivity are delivering long-term competitive advantage.

Future proof your expansion plans in a City Region striving to be one of the most environmentally progressive in the UK, where major investments are focused on creating sustainable industries and delivering rapid digital connectivity.

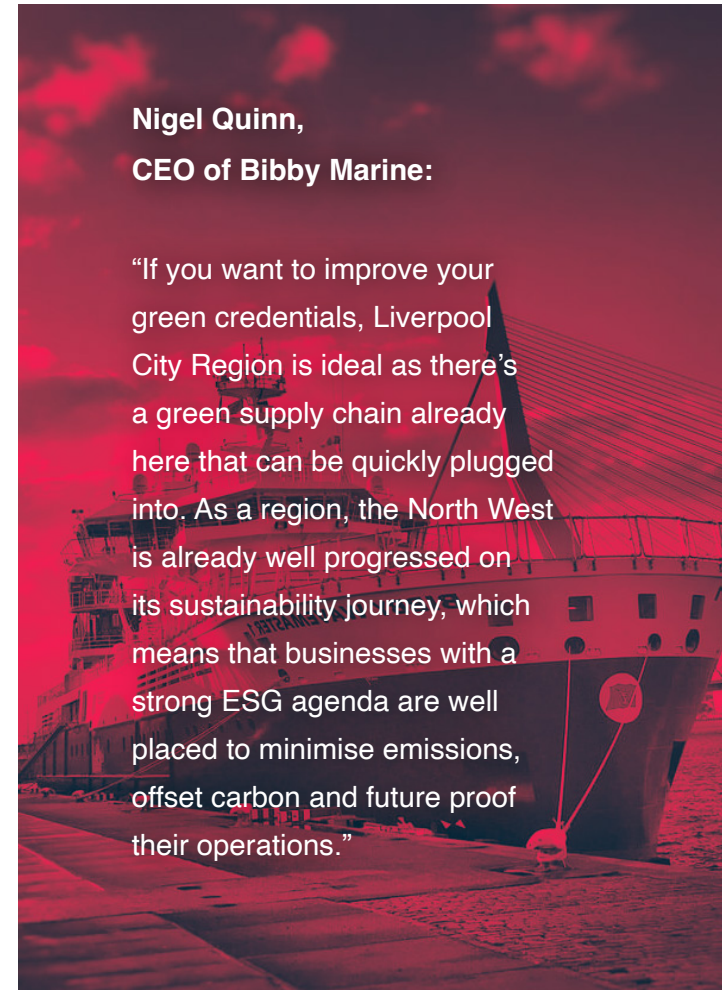
Already home to the world's second-largest concentration of offshore wind farms, Liverpool City Region is continuing to invest in long-term energy security and affordability through a Hydrogen Economy Programme, placing the region at the forefront of global hydrogen applications, and ambitious plans to harness the Mersey's tide to produce Gigawatt-scale power.

Our native industries are leading the charge towards long-term sustainability too. Glass Futures is bringing together global players with world-leading academic minds to eliminate CO2 from glass production via a new cluster in St Helens, while the National Packaging Innovation Centre aims to double the current UK global sustainable packaging market by 2030, developing an industry-led approach to eradicate single-use plastic from the market.

Future-proofed, resilient and high-capacity digital infrastructure is being delivered through a 212KM full fibre, gigabit-capable network infrastructure. This will place the Liverpool City Region among the most digitally connected in the UK, giving manufacturers the high-speed connectivity and transmission required for increasingly digitalised operations.

Nigel Quinn,
CEO of Bibby Marine:

“If you want to improve your green credentials, Liverpool City Region is ideal as there's a green supply chain already here that can be quickly plugged into. As a region, the North West is already well progressed on its sustainability journey, which means that businesses with a strong ESG agenda are well placed to minimise emissions, offset carbon and future proof their operations.”



| Case Study - VEC

The Virtual Engineering Centre (VEC), a University of Liverpool initiative based at Sci-Tech Daresbury, is the UK's leading centre of Virtual Engineering technology integration for industrial and commercial applications.

VEC's virtual design and manufacture capabilities use the latest specialist 3D visualisation and Physics-based simulation allowing organisations to explore their designs and optimise manufacturing and maintenance processes in a highly interactive and intuitive way.

An example of the VEC's approach is the collaborative R&D project, known as STRIVE (Simulation Tools for Rapid Innovation in Vehicle Engineering). The VEC worked with Bentley Motors, in conjunction with the Northern Automotive Alliance and local tech firms from Liverpool City Region to look at reducing product development time.

Sharing engineering data on their flagship model the Mulsanne, Bentley Motors and the VEC developed a unique framework to evaluate the assessment, verification and integration of VR technologies and immersive environments. The result was a reduction in Bentley's development timescale from 54 to 48 months and the creation of new highly-skilled roles at their factory.

Mark Harding, Manufacturing Project Leader for Continental & Flying Spur at Bentley Motors said: "The positive impact on the business gained from the deployment of the new toolsets at the Bentley site has been a direct result of this innovative collaboration between us, the University's Virtual Engineering Centre and agile North West based SMEs".

Tailored Support

With a 10.5% year on year increase in the formation of new businesses set up in 2021, now is the time to relocate to a City Region sporting new record growth and a £32 billion economy.

With a population of 1.5 million people and over 80,000 registered businesses, Liverpool City Region has an active and growing economy – with early mover advantage for those that locate here and meet the current and emerging demands for goods and services.

From subsidised office space and recruitment support, to your own dedicated Account Manager and introductions to local business networks, the Liverpool City Region Inward Investment Service team at Growth Platform are ready to offer you support and advice through every stage of setting up your business in the City Region.

Recognised as not only a great place to work and do business, but also an attractive and exciting place to live, our welcoming nature and captivating spirit make locating to Liverpool City Region a seamless decision.

Our inward investment service team offer a programme of support designed to assist businesses and entrepreneurs with a smooth move to the Liverpool City Region.

This programme is designed to help you settle in your new premises and establish a defined customer base before making any significant investment decisions.



Inspiring Place

Attract, retain and inspire the best talent by offering them an exceptional quality of life in a world-renowned capital of culture.



An inspiring location with a high quality of life

Internationally renowned for our vibrant culture, open green spaces and great lifestyle as well as dynamic economy, the Liverpool City Region is a sought-after destination for visitors, students and those wanting a high quality of life and great career opportunities.

Liverpool is a thriving city, yet its property prices and the cost of living remain low compared to other UK cities, providing the ideal location for both businesses and employees.

Liverpool has the largest number of museums and art galleries outside of London, with the Royal Albert Dock the city's biggest attraction. Find easy access to open green space such as parks, beaches, promenades and waterfronts, all within an hour of the city centre. National Parks such as the Lake District, Snowdonia and the Yorkshire Dales are also a short drive away.

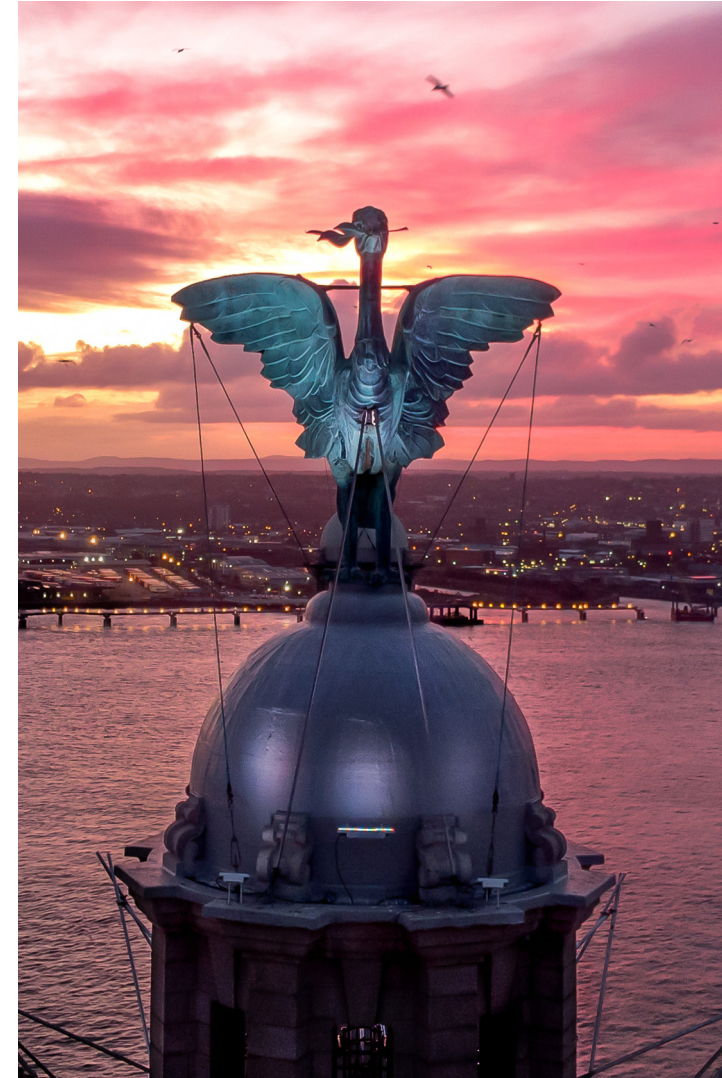
One of the UK's most affordable places to live, the City Region provides quality affordable housing for employees and their families. Liverpool City

Council has an ambition to build, buy or own up to 10,000 stock within the city in the next ten years. The average property price in Liverpool is £134k, considerably lower than the UK average of £256k, according to the UK House Price Index.

With well-regarded further and higher-education colleges, and high-performing state and independent schools the wider catchment area for the City Region is home to over 250,000 students across 14 Universities and boasts a strong pedigree of academic and research achievements.

There's also strong links to industry creating apprenticeship programmes across a wide spectrum of industry sectors and roles.

The City Region has excellent transport links across the United Kingdom, including to Manchester, London and Edinburgh, sea links to Ireland, as well as internationally through local airports, making it a well connected place to be.



Ready to see how the Liverpool City Region can inspire your business?

We would love to hear from you!

Simply scan the QR code to learn more and connect with our sector experts or alternatively, contact our Head of Investment Services.



Alice Lamb, Head of Investment Services

Tel: 44 (0)151 237 3919

Mobile: +44 (0)7715 123483

Email: alice.lamb@growthplatform.org

investliverpoolcityregion.com



METRO MAYOR
LIVERPOOL CITY REGION



European Union
European Regional
Development Fund



Powered by
growth.
platform
Liverpool City Region Growth Company

In association with



Department for
International Trade

Discover a port centric location offering global trade opportunities, a skilled manufacturing workforce and the latest smart factory capabilities.

A place for makers and creators, Liverpool City Region provides unrivalled transatlantic links and fast access to markets and consumers across the world.

With a Port that's the closest to more than 50% of UK manufacturers and with the capability to service 95% of the world's largest container ships, Liverpool City Region is driving continent-spanning connections and inspiring world-beating advances in manufacturing.

Home to one of Europe's largest biomanufacturing clusters as well as leading research capabilities clustered in Liverpool's Knowledge Quarter you'll be joining the likes of Jaguar Land Rover, Unilever and Astra Zeneca in benefitting from and advanced manufacturing facilities across the City Region.

With a 50,000-strong, modern manufacturing workforce the skill base here is enriched by the long-term presence of major OEMs, world-leading Universities and an agile, industry 4.0-enabled supply chain.

You can gain competitive advantage through accessible, state-of-the-art R&D infrastructure and dedicated digital manufacturing expertise as well as a progressive approach to sustainability.



**Managing Director of
Factorytalk UK, Neil Wetherall:**

“The region has great access to a strong talent pool of new recruits and new clients while also truly embracing and leading the digital transformation of manufacturing across all industries.”